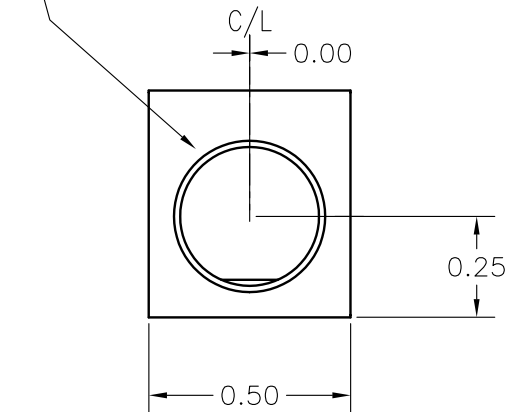
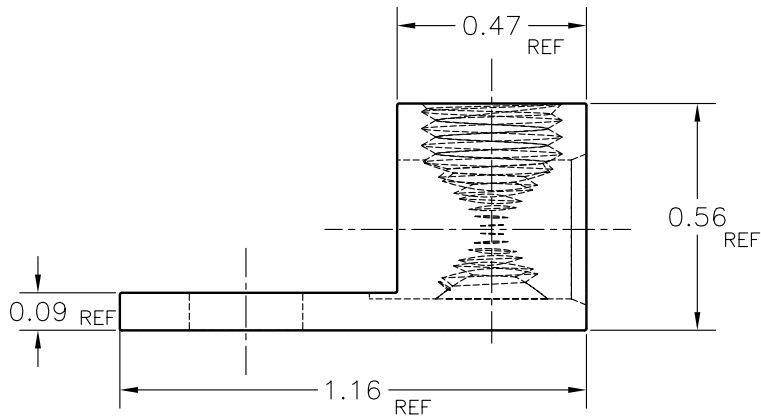


DRILL $\phi .344 \pm .010$ X THRU
CHAMFER REF .031 X 45°



NOTES:

THIS DRAWING AND DESIGN ARE THE PROPERTY OF INTERNATIONAL HYDRAULICS INC., CLEVELAND, OHIO, AND MAY NOT BE DUPLICATED, USED FOR BASIS OF DESIGN OR MANUFACTURE WITHOUT THE WRITTEN PERMISSION OF INTERNATIONAL HYDRAULICS INC., CLEVELAND, OHIO.

INTERNATIONAL HYDRAULICS, INC.

MARKING:

IHI, S2, 2-14, CU9AL

UNLESS OTHERWISE SPECIFIED
1. DIMS ARE IN INCHES
2. TOLERANCE ON DIM'S
3. REMOVE ALL BURRS AND SHARP EDGES.
2 PLACE (.00) \pm .010
3 PLACE (.000) \pm .005
FRACTION \pm 1/32
ANGLES \pm 1/2°

TITLE
SINGLE LUG - ALUMINUM
WIRE RANGE: 2 - 14

MATERIAL
6061-T6
FINISH
TIN PLATE - EMS 131A

SIZE A	DRAWN BY JDB	CHECK	DWG NO S2	REV
DATE 01.07.2000			THIS IS A CAD DRAWING, DO NOT MANUALLY REVISE	

